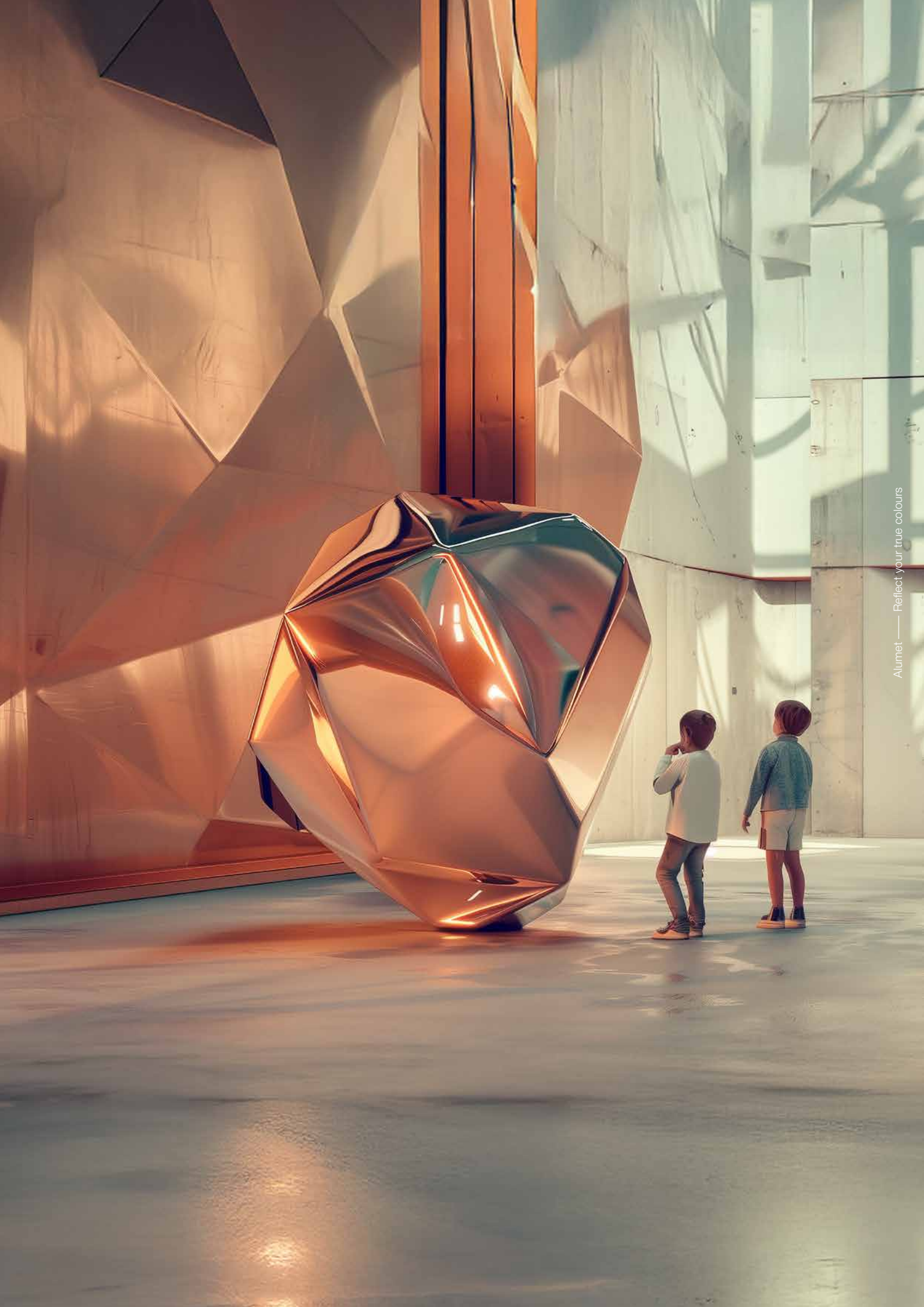


**Alumet®**



**Reflect your  
true colours**



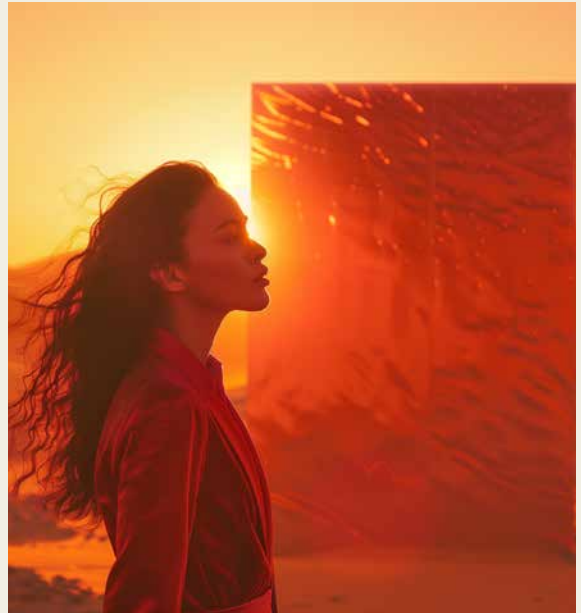
Each colour is destined to inspire,  
reflecting a commitment to prominence,  
innovation and sustainability.

# Our values

Architects want to make a mark. You want your designs to reflect your vision on contemporary design, to stand out and write history. Subsequently you pursue materials and techniques that speak elegance and guts, authenticity along with ingenuity, timelessness as well as innovation. Selecting only what resonates your ambition.

## Limitless creativity

— We are pioneers, we always think in possibilities and solutions. And these reach to newer heights.



## Driven by the beauty of passion

— Driven by timeless beauty, we are driven to work on optimizing and developing our services and goods every day.



# Unmatched quality

— We are the frontrunners when it comes to delivering the highest quality in anodizing solutions and products, and we continuously safeguard our services.

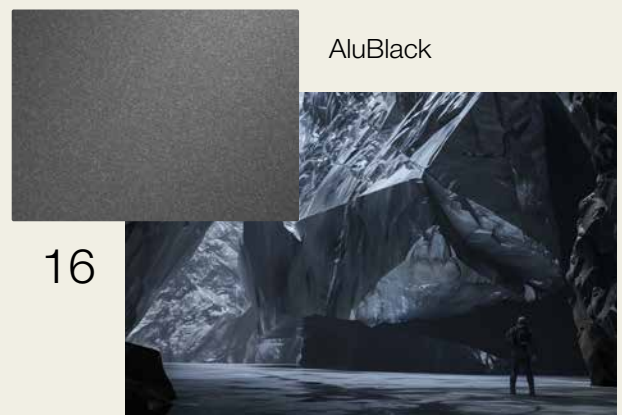


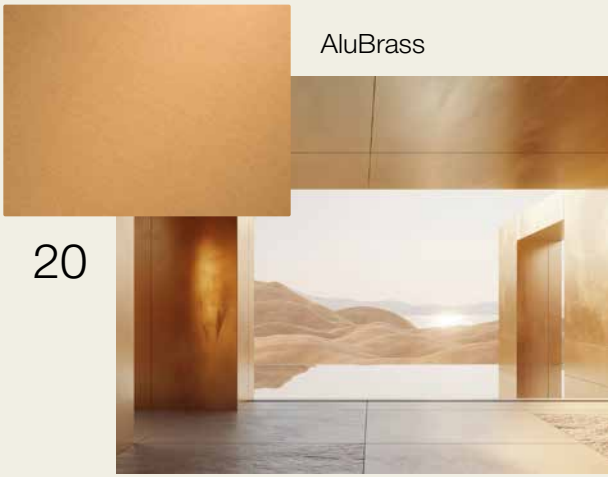
# Respecting our planet

— We always look at the bigger picture. We are aware of our surroundings and optimize our services to operate as sustainably as possible.

# Navigate your curiosity

Each colour is destined to inspire, reflecting a commitment to prominence, innovation and sustainability.





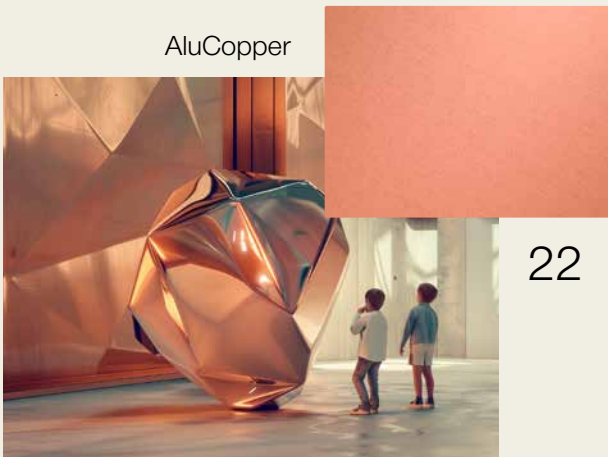
AluBrass

20



AluBlue

32



AluCopper

22



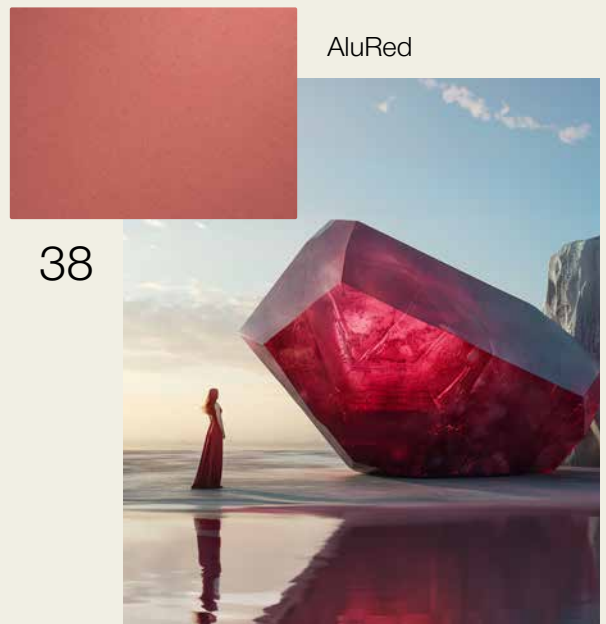
AluGreen

34



AluOldCopper

26



AluRed

38



AluGrey

28

# AluNature

AluNature reflects the authentic character of aluminium, enhanced through anodizing. This electrochemical process thickens the natural oxide layer up to 500 times, creating a surface that is both protective and visually pure. Its natural finish highlights the raw material while ensuring excellent resistance to wear, weather, and time.

At the “Philharmonie de Paris”, designed by Jean Nouvel, AluNature delivers a luminous, uncoated aesthetic that complements the building’s organic and flowing architecture. Its natural anodized aluminium finish enhances the play of light and shadow across the curving façade. Three different aluminium alloys were used to produce tonal variations across approximately 350,000 anodized birds, creating a dynamic surface that shifts gently with the changing light.



AluNature

---

## Finish options



E2 - Brushing



E5 - Polishing



E6 - Matt-etching



E7 - Brightening



E10 - Blasting

---

## Colours



AluNature01

---

## Project

Philharmonie de Paris

---

## Location

Paris

---

## Architect

Jean Nouvel



# AluGold

AluGold captures timeless elegance, available in shades from champagne to deep gold. The colouring process uses ferric salts that penetrate the anodized layer, resulting in a lightfast, UV-permanent finish. The refined brilliance of AluGold makes it a favourite for façades and interiors that demand both durability and luxury.

For “Swansea Arena”, Alumet anodized over 6,500 m<sup>2</sup> of perforated panels in AluGold03, integrating the city’s industrial heritage into a new design. The golden finish supports the building’s nighttime identity with programmable LED lighting, marrying durability with expressive architectural presence.



AluGold

## Finish options



E2 - Brushing



E5 - Polishing



E6 - Matt-etching



E7 - Brightening



E10 - Blasting

## Colours



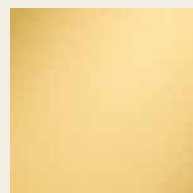
AluGold00



AluGold01



AluGold02



AluGold03

## Project

Swansea Arena

## Location

Wales

## Architect

AFL Architects



# Matt-etching

Matt-etching is a pre-treatment in which the aluminium surface is uniformly and purposely corroded in a controlled process to create a refined, non-reflective finish. Using a controlled acid bath, the process removes surface irregularities and produces a uniform oxide layer that diffuses light in a soft, satin appearance. This pre-treatment enhances the aesthetic by reducing glare but also improves surface consistency, making it ideal for large façades. The etched finish serves as an excellent base for anodizing, ensuring stable colour absorption and permanent UV resistance. Matt-etched aluminium is widely applied in architectural projects where subtle elegance and technical reliability must go hand in hand.





---

### InDefense — 3XN

At the “InDefense” project, Alumet applied matt-etched AluCopper panels across more than 10,000 m<sup>2</sup> of façade giving the building depth and rhythm while ensuring lasting colour stability in the urban environment.

# AluBronze

AluBronze offers warm earthy tones while maintaining the metallic gloss, ranging from subtle copper-browns to dark bronze achieved through electrolytic colouring with tin salts. Electrolytical anodizing provides outstanding lightfastness and weather resistance. Its rich tones give architectural projects a strong, natural presence, combining strength with understated sophistication.

At “OurDomain” in Rotterdam, AluBronze was combined with the Panelox technique to embed layers of meaning into the façade. The etched patterns reference the city’s resilience and transformation after the devastation of the Second World War, turning the building into both a modern residential landmark and a reflection of Rotterdam’s enduring spirit.



AluBronze

## Finish options



E2 - Brushing



E5 - Polishing



E6 - Matt-etching



E7 - Brightening



E10 - Blasting

## Colours



AluBronze01



AluBronze02



AluBronze03



AluBronze04

## Project

OurDomain

## Location

Rotterdam

## Architect

TANGRAM Architekten



# AluBlack

AluBlack delivers a deep, uniform black finish without the use of organic pigments. Through electrolytic colouring with metal salts, the anodized layer gains both depth and resilience. The result is a timeless and highly UV-permanent colour, ideal for bold architectural statements and long-lasting design consistency.

On the “Metis Montessori Lyceum” expansion, Atelier PRO uses dark aluminium elements (in effect AluBlack tones) to provide framing contrasts against lighter volumes. The deep black colour grounds the structure visually, accentuating form and composition while providing a durable, non-reflective surface.



AluBlack

---

## Finish options



E2 - Brushing



E5 - Polishing



E6 - Matt-etching



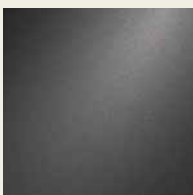
E7 - Brightening



E10 - Blasting

---

## Colours



AluBlack01

---

## Project

Metis Montessori Lyceum

---

## Location

Amsterdam

---

## Architect

Atelier PRO



# Brushing

Brushing is a mechanical pre-treatment where the aluminium surface is abraded with fine brushes or belts, creating a linear texture. This process removes minor surface defects and produces a distinctive grain that emphasizes craftsmanship and direction. The brushed lines catch light dynamically, giving the surface depth and character while still allowing the anodized oxide layer to form a strong protective barrier. From façades to interior details, brushed aluminium combines a tactile, hand-finished look with durability, making it one of the most popular choices for projects that require both a technical and aesthetic edge.





### Droogbak Amsterdam — Fokkema & Partners

In the renovation of the historic “Droogbak” in Amsterdam, brushed anodized aluminium was applied inside the atrium to create a refined, tactile presence. The linear brushing accentuates the curves of the staircase and wall panels, catching light in subtle variations that bring depth to the warm anodized tones. Used in contrast with the monumental brickwork, the brushed finish connects heritage and modernity, offering both elegance and long-term durability in a busy interior space.

# AluBrass

AluBrass combines the warmth of brass with the endurance of aluminium. Using a combination of electrolytic and inorganic colouring, shades vary from light golden-brown to deep antique brass. The finish retains its brilliance even under intense sunlight, making it perfect for projects that seek a classic metallic expression with modern performance.

In the “Alexander Hotel” in Noordwijk AluBrass was enhanced using our Panelox Rust pattern, adding texture and depth to the anodized surface. This unique finish highlights the metallic tones of brass in a way that catches light and creates visual richness, offering architects a refined and durable option for distinctive façades and interiors.



AluBrass

---

## Finish options



E2 - Brushing



E5 - Polishing



E6 - Matt-etching



E7 - Brightening



E10 - Blasting

---

## Colours



AluBrass01



AluBrass02



AluBrass03

---

## Project

Alexander Hotel

---

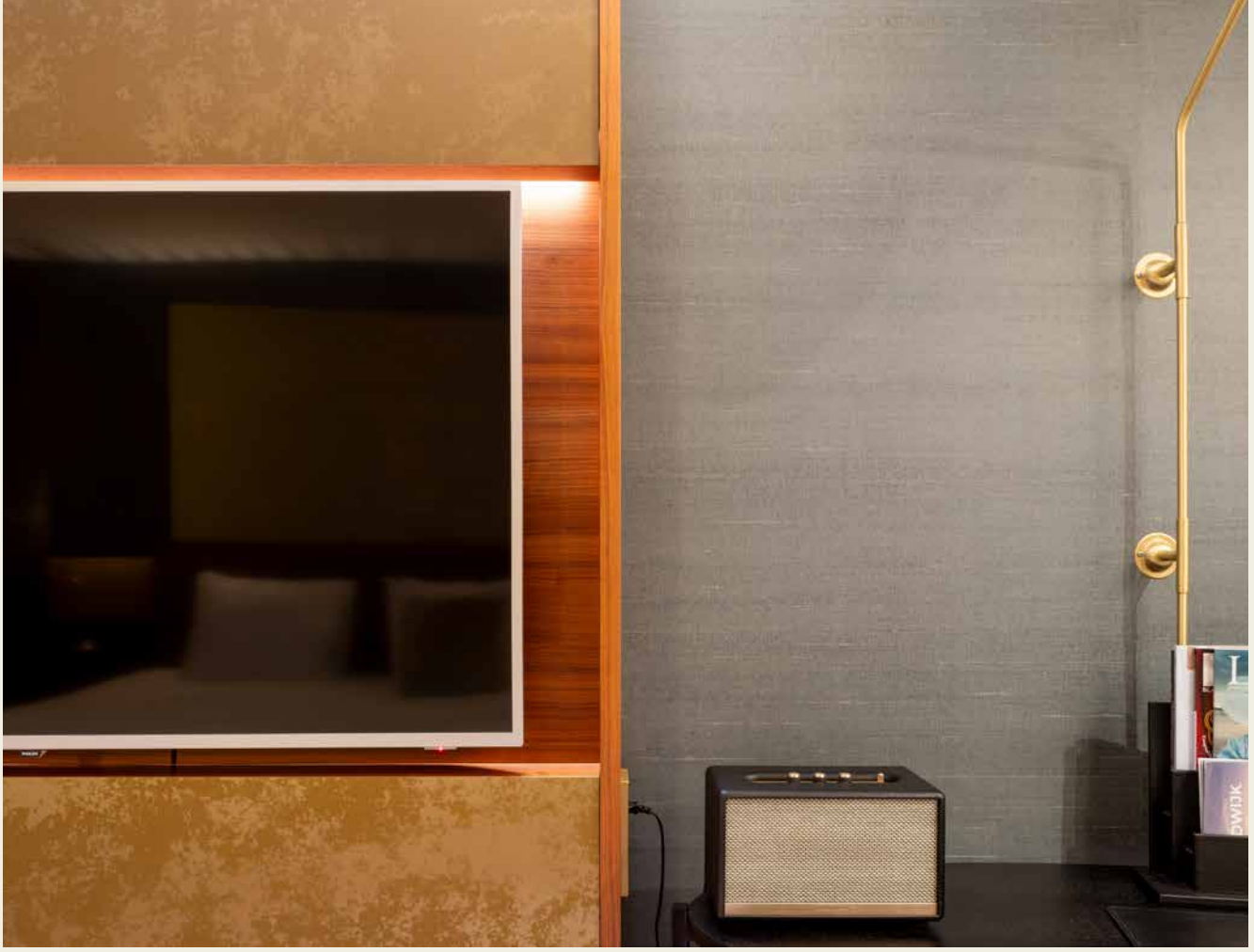
## Location

Noordwijk

---

## Architect

STUDIO HUGO



# AluCopper

AluCopper embodies the distinctive glow of copper while maintaining the sustainability and strength of aluminium. This two-step process fuses electrolytic and inorganic colouring, producing warm copper tones that resist fading. AluCopper lends buildings a sense of craftsmanship and elegance, while offering architects a durable and light alternative to natural copper.

At the “Oman Across the Ages Museum”, AluCopper was elevated using our Panelox Rust pattern, giving the façade a rich texture and layered depth. The warm copper finish reflects the heritage of the region while the etched pattern enhances light play across the surface, resulting in an architectural statement that balances tradition, innovation, and long-lasting performance.



AluCopper

## Finish options



E2 - Brushing



E5 - Polishing



E6 - Matt-etching



E7 - Brightening



E10 - Blasting

## Colours



AluCopper01



AluCopper02



AluCopper03

## Project

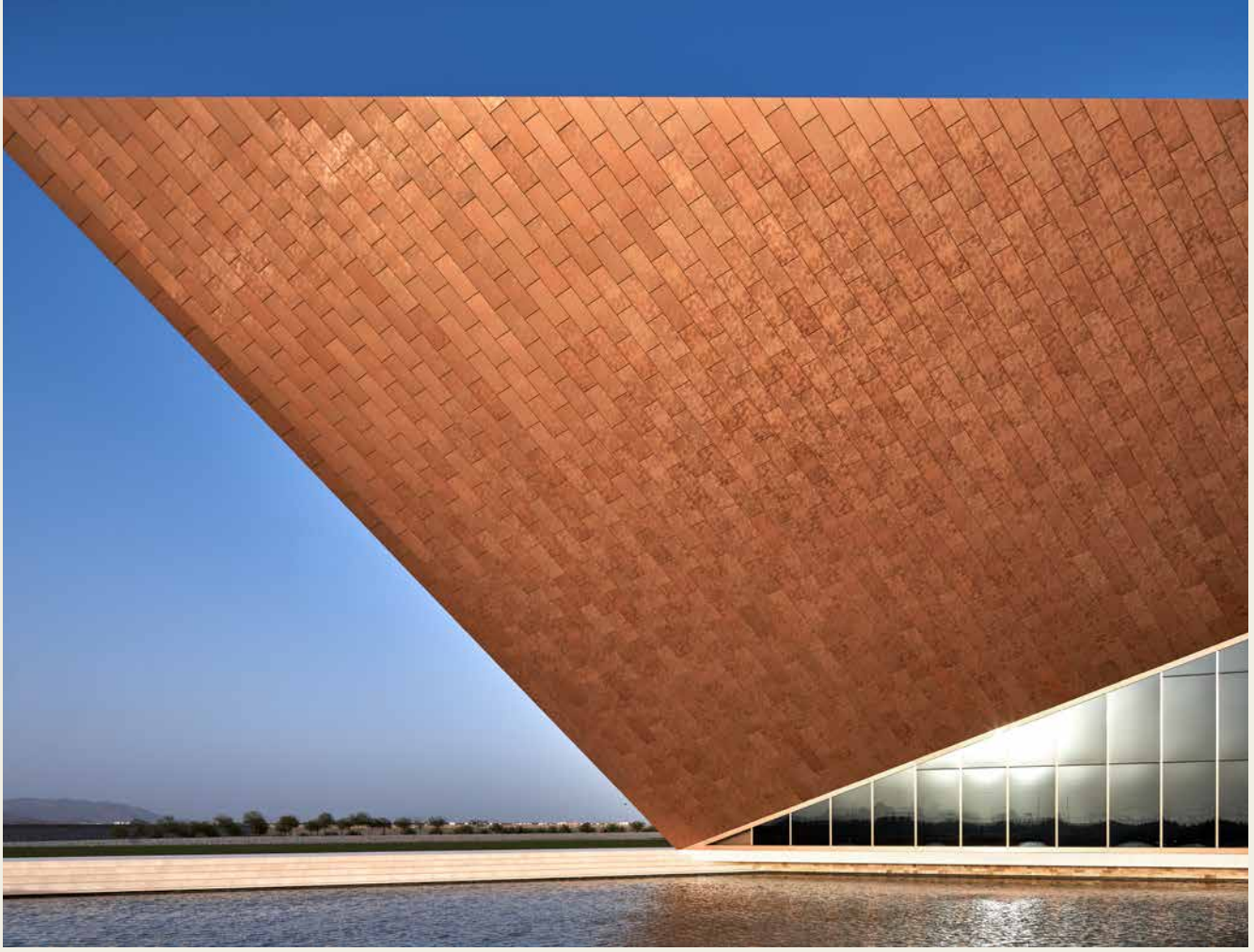
Oman Across the Ages Museum

## Location

Oman

## Architect

COX Architecture



# Brightening

Brightening is achieved through chemical polishing, a treatment that evens out the anodized surface at a microscopic level. This process increases light reflection, producing a vivid, high-lustre appearance that enhances the brilliance of anodized colours. Brightening finishes are especially effective for highlighting metallic tones, as they intensify colour depth and clarity. At the same time, the protective anodized layer ensures resistance to corrosion and UV. Brightening is often chosen for architectural accents and façades where luminosity and a striking visual identity are essential as it offers a consistent finish throughout the entire process.





---

### Lyght Düsseldorf — caspar.

At “Lyght” in Düsseldorf, brightened aluminium was used to amplify brilliance and reflectivity across the façade. The finish intensifies the metallic tones, producing a vivid appearance that interacts with daylight and reinforces the project’s modern, high-tech identity.

# AluOldCopper

AluOldCopper captures the patinated depth of aged copper, with tones spanning from light brown to rich chocolate. Created through a double electrolytic process, this finish ensures exceptional colour stability and UV permanence. Its authentic, time-worn appearance brings warmth and character to both traditional and contemporary designs.

For the “Maison de l’Innovation” in Nantes, the façade employs rich copper and aged-metal tones via anodized finishes to reflect the building’s blend of tradition and technology. These tones harmonize with the building’s timber and glass elements, giving a sense of patina and gravitas to a modern innovation hub.



AluOldCopper

---

## Finish options



E2 - Brushing



E5 - Polishing



E6 - Matt-etching



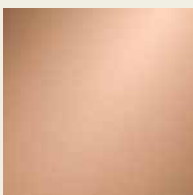
E7 - Brightening



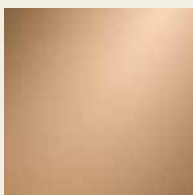
E10 - Blasting

---

## Colours



AluOldCopper01



AluOldCopper02



AluOldCopper03

---

## Project

Maison de l’Innovation

---

## Location

Nantes

---

## Architect

Baumschlager Eberle Architekten



# AluGrey

AluGrey represents subtlety and modernity, achieved through interference colouring. By reshaping the anodized surface with alternating currents, the finish reflects light in unique ways, creating refined grey tones without pigments. AluGrey is ideal for sleek façades that require both sophistication and superior resistance.

At the “Geosciences Faculty”, AluGrey-coloured plinths and elements echo the geological inspiration behind the architecture as it represents the earth layers as a reference to the geoscientific studies.



AluGrey

## Finish options



E2 - Brushing



E5 - Polishing



E6 - Matt-etching



E7 - Brightening



E10 - Blasting

## Colours



AluGrey01



AluGrey02



AluGrey03



AluGrey04

## Project

Faculteit Geowetenschappen

## Location

Utrecht

## Architect

INBO Architecten



# Polishing

Polishing is a mechanical process that gradually smooths the aluminium surface to a near mirror finish. Using successive stages of abrasive and polishing compounds, the surface becomes highly reflective, showcasing the precision of the metal while remaining protected by anodizing. The polished effect adds a modern, high-end character to any design, ideal for projects where bold statements are required. Technically, polishing also minimizes surface roughness, which enhances the durability of the anodized oxide layer and simplifies maintenance. It is the perfect finish for sleek façades and interiors where performance and aesthetics must both be flawless.





---

### Taikoo Place — HDA | Hugh Dutton & Associés

In the “Taikoo Place” development, polished aluminium elements create a mirror-like effect that enhances the tower’s modern lines. The finish reflects both sky and city, reinforcing the project’s ambition as a global business hub while maintaining the durability of anodized protection.

# AluBlue

AluBlue adds vibrancy through interference colouring, where controlled refraction effects generate a deep, durable blue. This innovative technique ensures the finish is UV-permanent, maintaining its colour even under the toughest conditions. AluBlue is perfect for accents or bold architectural surfaces seeking a modern identity.

At the “Shackleton Experience” in Athy, AluBlue was used to emphasize the new extension, shaped like an iceberg to reflect Shackleton’s Antarctic explorations. The deep blue anodized panels create a crisp contrast and just like our AluBlue, the Shackleton façade symbolizes endurance and discovery while giving the museum a distinctive presence.



AluBlue

---

## Finish options



E2 - Brushing



E5 - Polishing



E6 - Matt-etching



E7 - Brightening



E10 - Blasting

---

## Colours



AluBlue01

---

## Project

Shackleton Experience

---

## Location

Athy

---

## Architect

OBFA Architects



# AluGreen

AluGreen brings a natural touch with its interference-based deep green finish. Through precise anodizing and pore adjustment, light and colour interact to create a vivid yet lasting result. Its unique shade provides designers with a sustainable, durable option to blend structures harmoniously with their surroundings.

At “Huis aan de Haven”, AluGreen was used to echo the waterside and landscaped surroundings. The anodized green panels help the building integrate into its context visually, while delivering a durable, colour-stable façade suited for coastal exposure.



AluGreen

---

## Finish options



E2 - Brushing



E5 - Polishing



E6 - Matt-etching



E7 - Brightening



E10 - Blasting

---

## Colours



AluGreen01

---

## Project

Huis aan de Haven

---

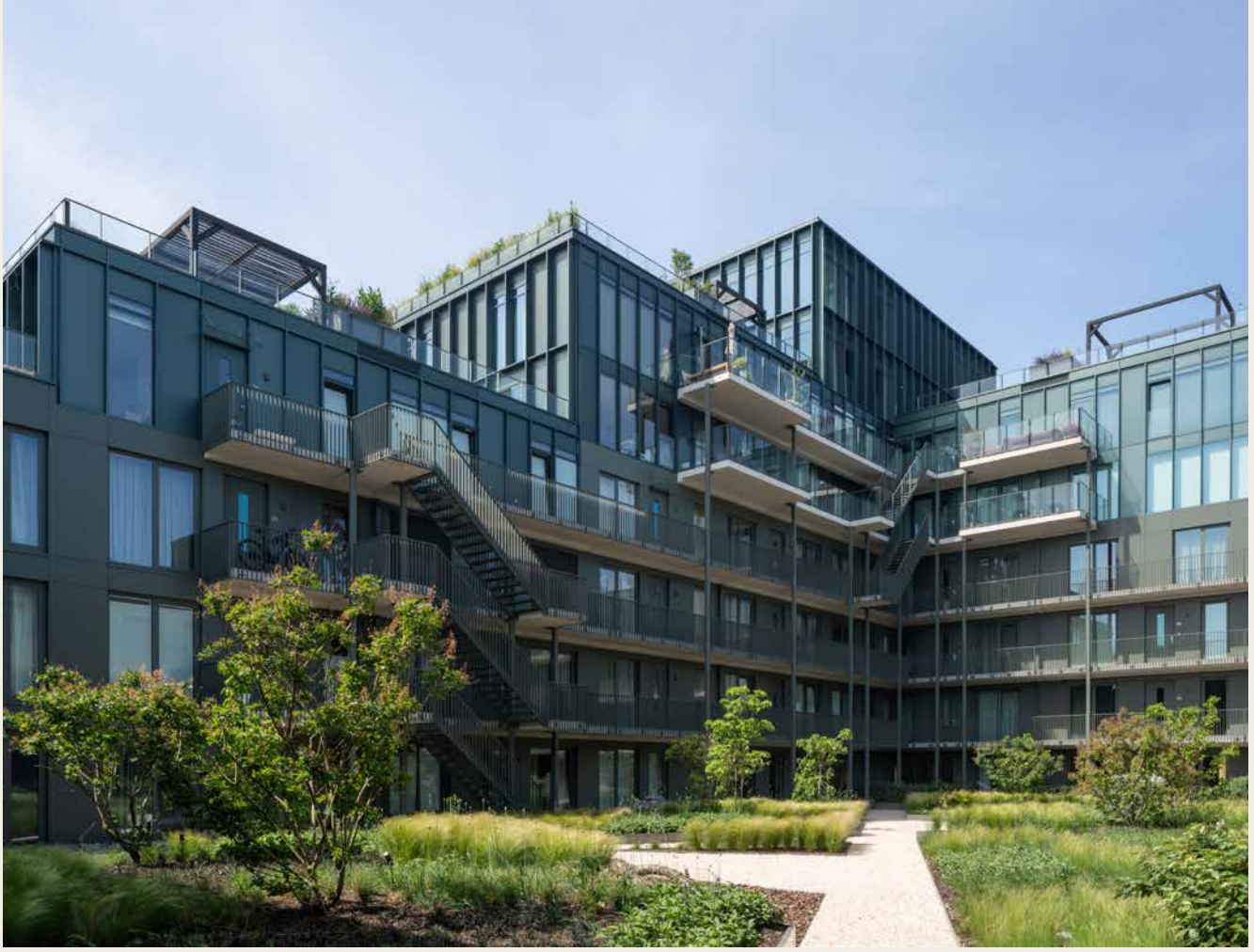
## Location

Leeuwarden

---

## Architect

Powerhouse Company



# Blasting

Blasting is a surface treatment where fine abrasive particles are propelled at high velocity against the aluminium. Depending on the chosen medium, such as glass beads or corundum, different textures can be achieved, ranging from soft matte to a rougher industrial appearance. The process creates a uniform, non-reflective surface that reduces visual roughness and provides excellent conditions for anodizing. Once anodized, blasted aluminium develops into a robust and weather-resistant finish that is both tactile and architecturally understated. This finish is highly valued for façades where a durable, timeless, and low-gloss appearance is required, often complementing natural stone or concrete elements.





---

### The Forge — Piercy&Company

For “The Forge” in London, blasted anodized aluminium profiles were selected to achieve a uniform matte texture that complements the project’s sustainable design. The finish provides a robust, low-gloss appearance that reduces visual noise, creating a calm and timeless surface that harmonizes with surrounding materials.

# AluRed

AluRed offers a spectrum of striking shades, from light rose to deep cardinal red. Using copper salts in the electrolytic colouring process, this finish achieves long-lasting vibrancy without fading colours. Its bold tones make it a standout choice for architectural details where both high performance and visual impact are essential.

On May 13th, 2000, a devastating explosion at a former fireworks factory destroyed an entire neighbourhood in Enschede, leaving a lasting mark on the city's history. Today, De Weverij stands on that very site as a symbol of renewal and creativity. AluRed was combined with our Panelox Rust Pattern to bring depth and storytelling to the façade. The etched patterns and warm red tones connect the building to its past, reflecting resilience and transformation while turning the site into a cultural landmark that celebrates recovery through design.



AluRed

## Finish options



E2 - Brushing



E5 - Polishing



E6 - Matt-etching



E7 - Brightening



E10 - Blasting

## Colours



AluRed01



AluRed02



AluRed03

## Project

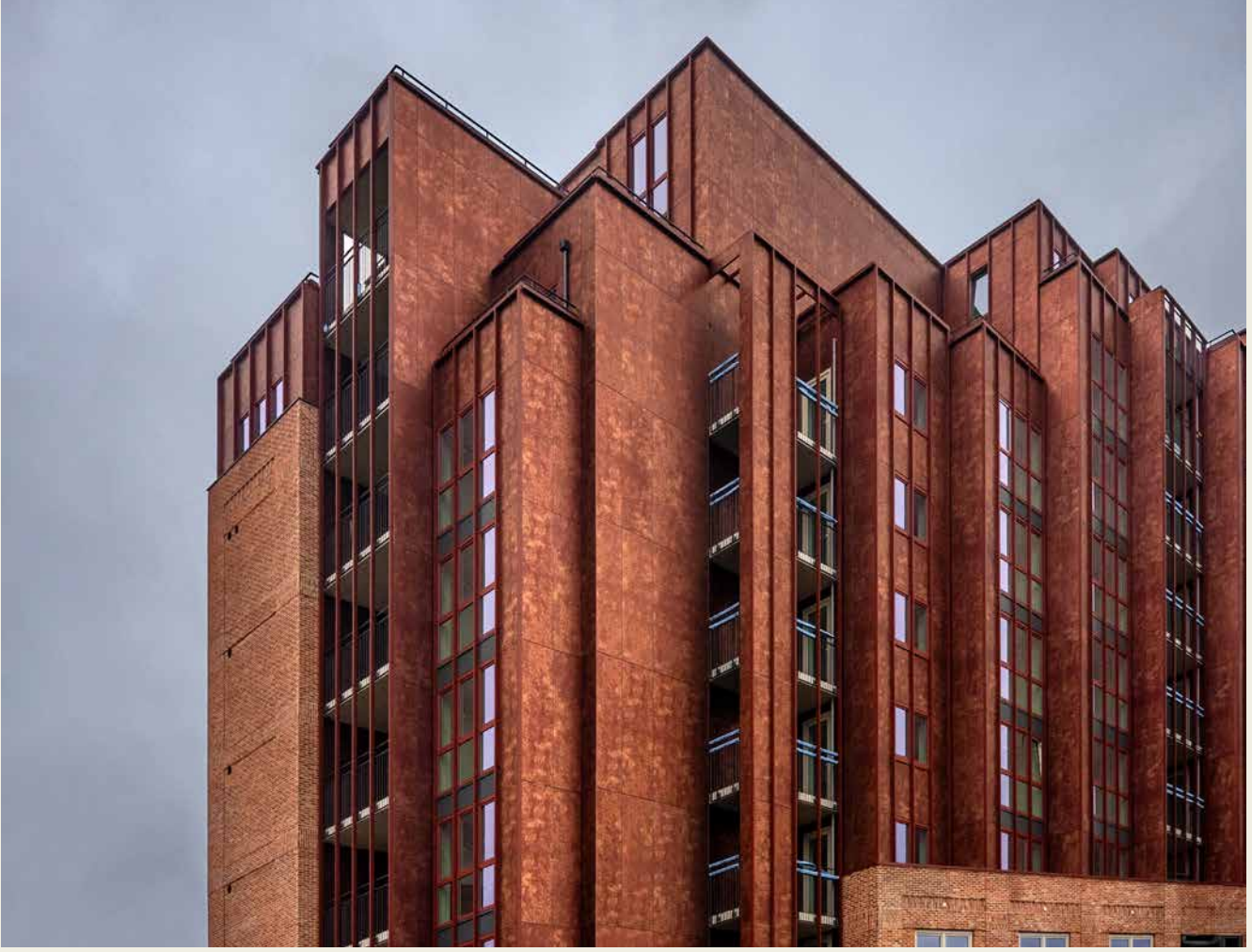
De Weverij

## Location

Enschede

## Architect

TANGRAM Architekten



# Our solutions



## **AluGuard<sup>®</sup>** Protective pre-seal

— During construction, mortar and concrete run-off can stain or damage anodized surfaces — often irreversibly. Our AluGuard pre-seal protects the aluminium with an invisible barrier that prevents staining and makes post-installation cleaning far easier. This pre-treatment is especially valuable on active construction sites and for large façade projects.

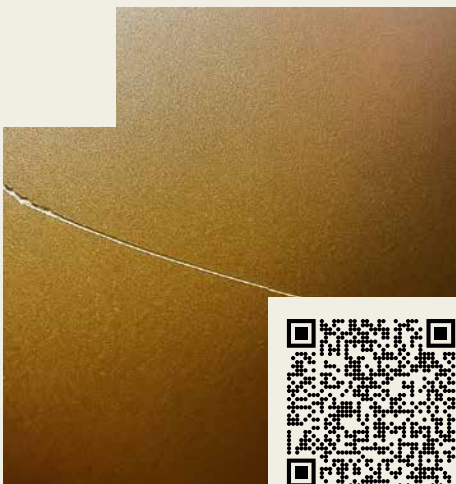
## **AluCare<sup>®</sup>** Cleaning Kit

— Standard cleaning agents can be too aggressive for anodized aluminium, leading to discoloration or dulling of the surface. The AluCare Cleaning Kit was developed specifically for the safe and effective maintenance of anodized surfaces. It preserves the original finish and extends the life and beauty of the material, even in high-traffic or urban environments.



## **AluCare<sup>®</sup>** Repair Kit

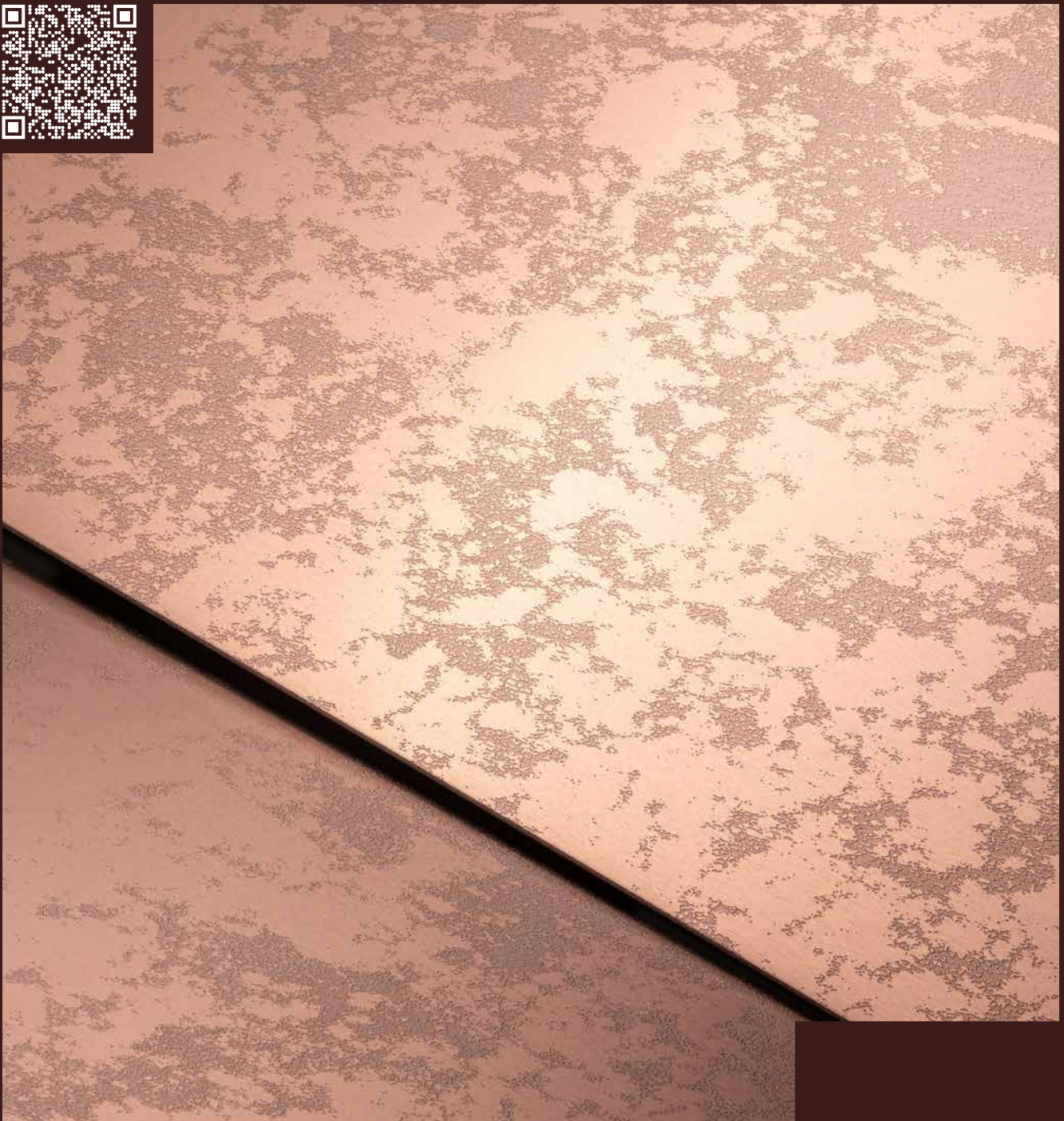
— Scratches may occur during transport, handling, or installation, affecting the visual quality of anodized panels. Our AluCare Repair Kit is designed for efficient, on-site cosmetic repair of light surface damage. It allows contractors and maintenance teams to restore a clean and uniform look with minimal effort and excellent visual results.



# Panelox<sup>®</sup>

## Double Anodizing

— Traditional anodizing is often associated with flat, uniform surfaces. With Panelox, Alumet introduces the possibility to create depth, texture, and even complex visual patterns within the anodized layer itself. From subtle linear effects to bold graphical elements, Panelox transforms aluminium into a creative medium for contemporary architecture.

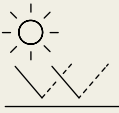





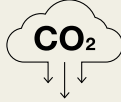



# Technical specifications

## Explore colours

Coding	Colour	Coding	Colour
AluNature01	Natural (VOM1)	AluBronze01	Titanium, light bronze (C31)
AluGold00	New silver	AluBronze02	Medium, light bronze (C32)
AluGold01	Champagne (very light gold)	AluBronze03	Medium bronze (C33)
AluGold02	Gold (VOM2)	AluBronze04	Dark bronze (C34)
AluGold03	Dark gold (VOM3)	AluBlack01	Black (C35)
AluCopper01	Light copper (orange)	AluBrass01	Light brown brass
AluCopper02	Medium light copper	AluBrass02	Medium light brown brass
AluCopper03	Medium dark copper	AluBrass03	Medium dark brown brass
AluOldCopper01	Light old copper	AluGrey01	Light grey
AluOldCopper02	Medium old copper	AluGrey02	Medium light grey
AluOldCopper03	Medium dark old copper	AluGrey03	Dark grey
AluRed01	Light red (pink)	AluGrey04	Anthracite dark grey
AluRed02	Medium light red	AluGreen01	Dark green
AluRed03	Medium dark red	AluBlue01	Dark blue

## Anodizing

Coding	Layer thickness	Use		
A20	20 micron	Outdoor use (standard outdoor use)		
A25	25 micron	Outdoor use (industrial / coastal area or BS 3987)		
				
	High solar reflectivity, cool buildings	Low maintenance (easy to clean)	Anodizing = Al <sub>2</sub> O <sub>3</sub> = 100% reusable	A1 Fire rating (non-combustible)
				
	LCA - Expected lifespan of more than 80 years	Ultra-durable, corrosion resistant and colourfast	EPD - Low carbon oxide emissions	Scratch resistant

## Pre-treatment

Coding	Pre-treatment	Finish
E2	Brushing (VB2)	Visible brush marks
E5	Grinding + polishing (VB5)	Smooth shiny surface
E6	Chemical matt-etching (VB6)	Matt surface
E7	Chemical brightening	Shiny bright surface
E8	Polishing + chemical brightening	Smooth shiny bright surface
E9	Shotblasting + chemical brightening	Shiny sparkle surface
E10	Shotblasting + matt-etching	Smooth ultra matt surface



When architectural excellence meets the highest technical and aesthetic specifications, we get to enrich our surroundings with the prominent and authentic characteristics of aluminium.



### Contact and inquiries

info@alumet.nl  
+31 (0)76 50 43 130

### Experience center

Alumet bv  
Mon Plaisir 32  
4879 AN Etten-Leur  
The Netherlands

[www.alumet.nl](http://www.alumet.nl)

### About Alumet

Alumet has been a preferred supplier to architects and designers like you, for over half a century. Pioneering relentlessly to find new anodizing techniques and developments in aluminium facade and wall cladding. Because aluminium has always been our canvas: the endlessly recyclable, light weighted metal of the future that adds an avant-gardist edge to every surrounding.

With our cutting-edge technology, we do not only strive to deliver products that bring architectural visions to life, but we also aim to minimize our own environmental footprint by finding new ways to reduce the use of natural resources in our production process.