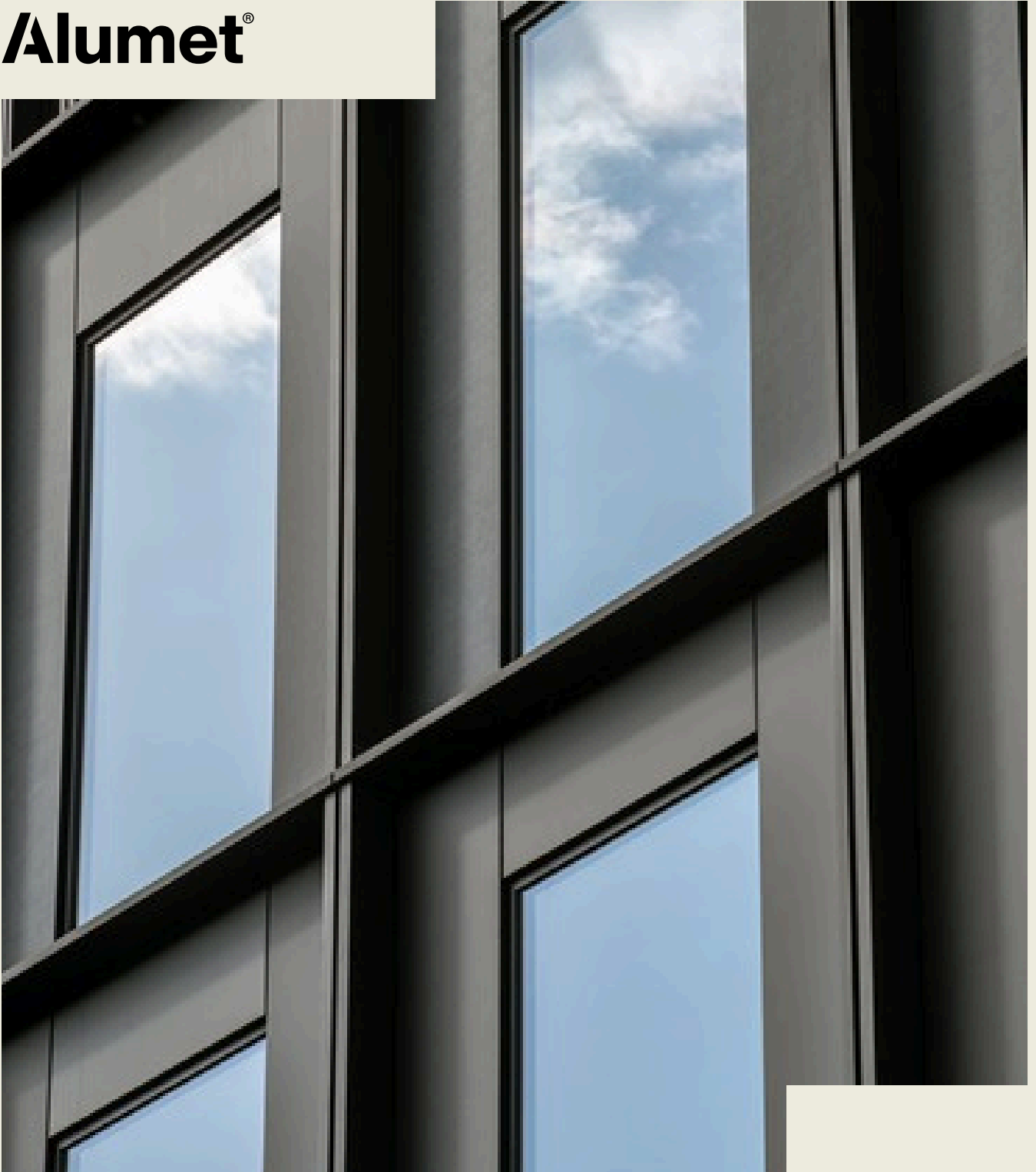


**Alumet®**



**Sample book  
ultra matt**

# Project — The Forge

Located on Southwark Bridge Road, The Forge replaces a former warehouse with two stepped commercial buildings offering 139,000 sqft of sustainable workspace. Finished in E10 ultra matt anodized aluminium, the façade recalls the site's former phosphor bronze factory through vertical bronze-toned fins. Subtle colour variations distinguish each volume, while the changing rhythm of the fins adds depth and architectural expression.

**Project**  
The Forge

**Architect**  
Piercy & Company

**Location**  
London



Alumet — Colour guide 2026 — Ultra matt

“Ultra matt anodized aluminium achieved the softness and depth we were looking for, without the weight, fragility or maintenance challenges associated with ceramic facades.”



**A refined surface through kinetic satinizing.**

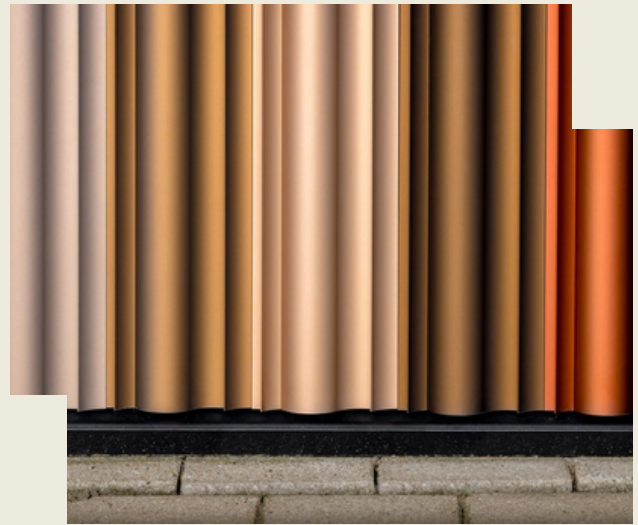
E10 ultra matt is created through kinetic satinizing, a mechanical surface treatment that produces a soft, low reflection mineral texture. Unlike E6 chemical etching, this process does not dissolve aluminium. Instead, the surface is refined through a controlled, non abrasive treatment. Because no aluminium is chemically removed, the process is more resource efficient while preserving the integrity of the material. The result is a calm ultra matt finish with a uniform architectural appearance and the durability of anodized aluminium.

## Uniform surfaces across profiles and panels.

---

Ultra matt reduces the visibility of extrusion lines that can occur in aluminium profiles. Through controlled shotblasting before anodizing, the E10 ultra matt finish creates a refined surface texture that softens reflections and evens out natural variations in the material, resulting in increased colour uniformity.

This treatment allows extruded profiles and flat panels to share a more consistent visual character. By diffusing light evenly across the surface, facade elements read as one coherent architectural material rather than a collection of individual components. The result is a calm and controlled appearance that supports uniform facades, particularly on larger buildings where visual consistency is critical.



## Ceramic aesthetics, aluminium reliability.

---



Ultra matt aluminium delivers the calm, mineral appearance often associated with ceramic or terracotta facades while avoiding the limitations of those materials. Aluminium is significantly lighter, reducing structural loads on the building and simplifying transport, installation and handling on site.

Unlike ceramic elements, aluminium panels do not shatter and the anodized finish does not blister or peel. This provides a durable and reliable facade surface that maintains its appearance over time. The combination of low weight, structural strength and long term colour stability makes ultra matt anodized aluminium a practical solution for architectural facades where both performance and aesthetics are essential.

### Ceramic or terracotta facades

- Heavy and structurally demanding
- Fragile, risk of cracking & fragmentation
- Limited panel sizes
- Increased transport and installation risk
- Limited design flexibility due to weight and breakability
- Cost intensive

### Ultra matt anodized facades (E10 shotblasting)

- + Lightweight, low structural load
- + Impact resistant and safe to handle
- + Suitable for large panels and extrusions
- + Easier and safer transport and installation
- + Uniform surface appearance across profiles and panels
- + Cost efficient facade solution

# Technical specifications

## Explore colours

Coding	Colour	Coding	Colour
AluNature	Natural (VOM1)	AluCopper01	Light copper (orange)
AluGold00	New silver	AluCopper02	Medium light copper
AluGold01	Champagne (Very light gold)	AluCopper03	Medium dark copper
AluGold02	Gold (VOM2)	AluOldCopper01	Light old copper
AluGold03	Dark Gold (VOM3)	AluOldCopper02	Medium old copper
AluBronze01	Titanium – light bronze (C31)	AluOldCopper03	Medium dark old copper
AluBronze02	Medium – light bronze (C32)	AluBrass01	Light brown brass
AluBronze03	Medium bronze (C33)	AluBrass02	Medium light brown brass
AluBronze04	Dark bronze (C34)	AluBrass03	Medium dark brown brass
AluBlack	Black (C35)	AluBlue	Dark blue
AluGrey01	Silver grey	AluGreen	Dark green
AluGrey02	Slate grey	AluRed01	Light red (pink)
AluGrey03	Zinc grey	AluRed02	Medium light red
AluGrey04	Anthracite grey	AluRed03	Medium dark red

## Anodizing

Coding	Layer thickness	Use
A20	20 micron	Outdoor use (standard outdoor use)
A25	25 micron	Outdoor use (industrial / coastal area or BS 3987)



High solar reflectivity, cool buildings



Low maintenance (easy to clean)



Anodizing =  $AL_2O_3$  = 100% reusable



A1 Fire rating (Non-combustible)



LCA - Expected lifespan of more than 80 years



Ultra-durable, corrosion-resistant and colourfast



EPD - Low carbon oxide emissions



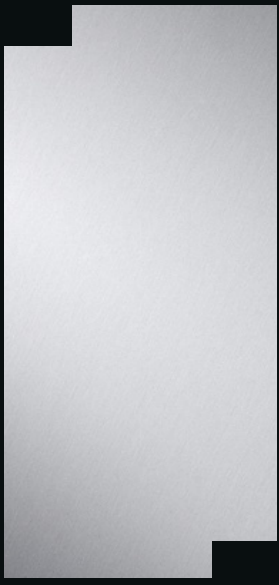
Scratch resistant

## Pre-treatment

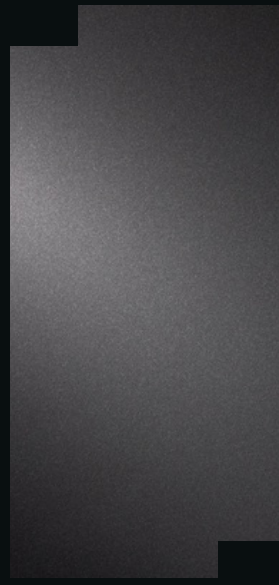
Coding	Pre-treatment	Finish
E2	Brushing (VB2)	Visible brush marks
E5	Grinding + polishing (VB5)	Smooth shiny surface
E6	Chemical matt etching (VB6)	Matt surface
E7	Chemical bright	Shiny bright surface
E8	Polishing + chemical bright	Smooth shiny bright surface
E9	Shotblasting + chemical bright	Shiny sparkle surface
E10	Shotblasting + matt etching	Smooth ultra matte surface

**Please note:** The samples in this booklet are indicative and serve as a visual reference only. They do not constitute as limit samples. No rights can be derived from these samples. Final appearance may vary depending on application, geometry, production parameters and lighting conditions. Please contact us for accurate range samples.

E10 - AluNature



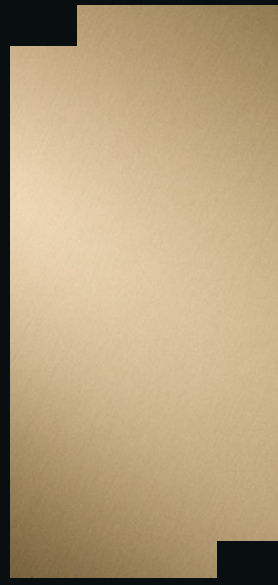
E10 - AluBlack



E10 - AluBronze 01



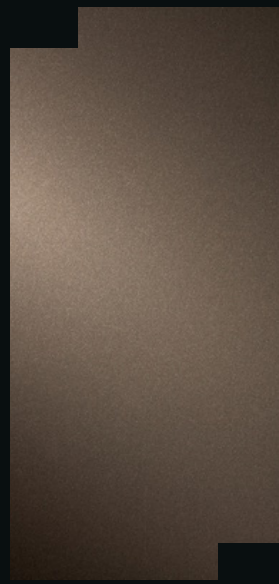
E10 - AluBronze 02



E10 - AluBronze 03



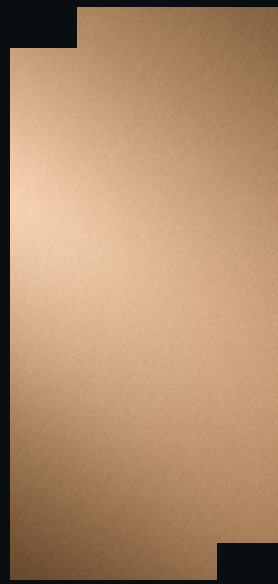
E10 - AluBronze 04



E10 - AluOldCopper 01



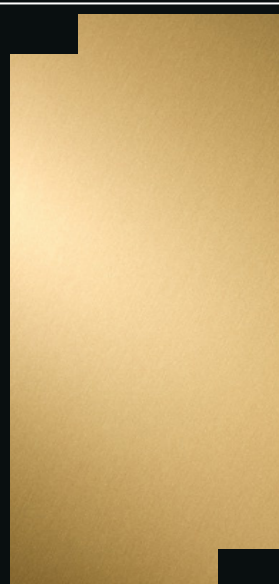
E10 - AluOldCopper 02



E10 - AluOldCopper 03



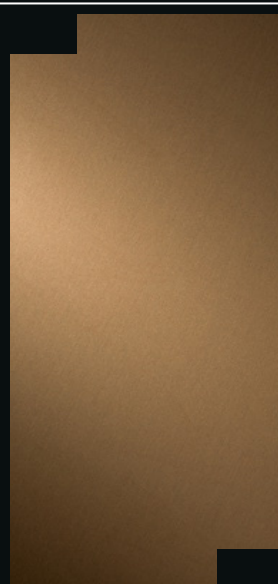
E10 - AluBrass 01



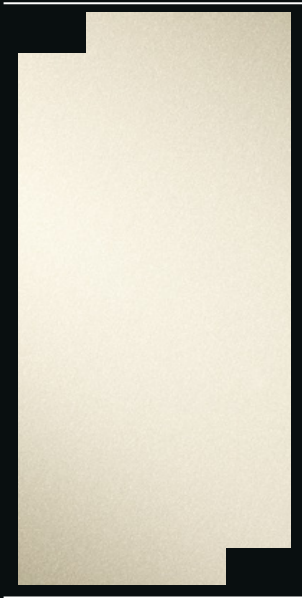
E10 - AluBrass 02



E10 - AluBrass 03



E10 - AluGold 00



E10 - AluGold 01



E10 - AluGold 02



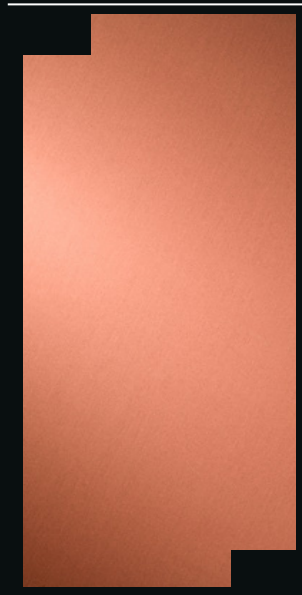
E10 - AluGold 03



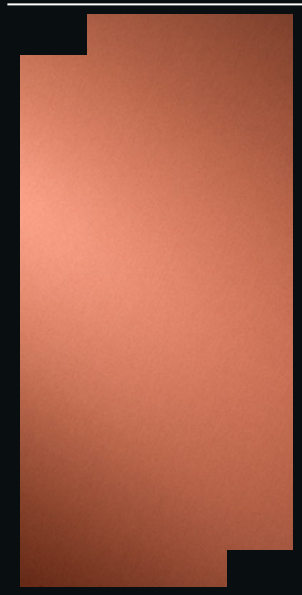
E10 - AluCopper 01



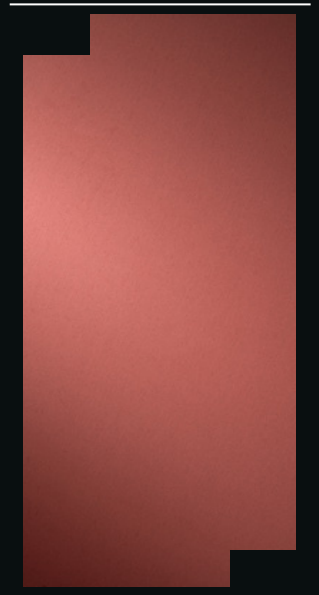
E10 - AluCopper 02



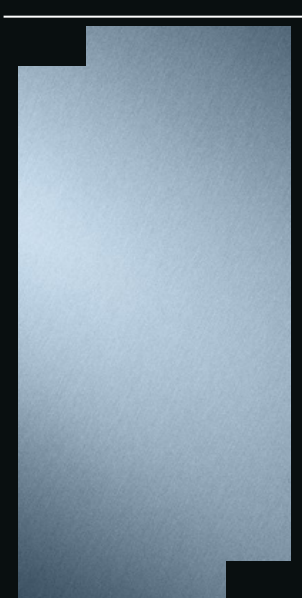
E10 - AluCopper 03



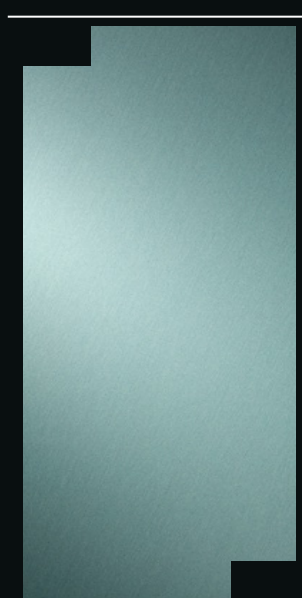
E10 - AluRed 03



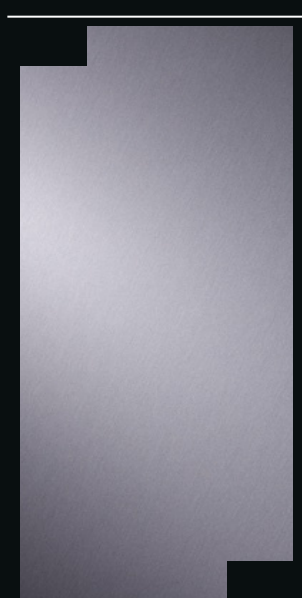
E10 - AluBlue



E10 - AluGreen



E10 - AluGrey 03



E10 - AluGrey 04

